

SONIA

CABALLERO

ART

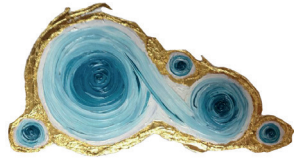
CATALOGUE



SONIA
CABALLERO
ART

*Dedicated to my three children and especially to Miguel,
on his 18th birthday. Spread your wings and fly over lands
of happiness.*

I will always be by your side.



SONIA

CABALLERO
ART



BIOGRAPHY

I was born in Madrid, Spain, in 1976. My first contact with painting was in my infancy at the age of seven. In 1986 I moved to live in Seville for family reasons.

In 1997 I traveled to Japan for the first time and in 1998 I finished my studies in Advertising, Marketing and Art Direction and I moved to Japan to live there.

In 2005 I finished studies in Interior Decoration.

During my trip to Kyoto in 2000 for first time, my artistic vocation began to take shape.

My works are directly influenced by Japanese art, being soaked up in the different traditional techniques of the country, and at the same time developing these cultural techniques.

My works bear a seal, both personal and universal, with a clear influence of Japanese art and culture, combining visual techniques of Eastern and Western oil painting. In doing so, I had managed to develop a very original and quite distinctive style, both in painting and Japanese traditional lacquer decoration, resulting in my own technique, the «Kourinhaku-oil» and «Neo-Naturalism» style.

I had developed a genuine pictorial language, gathering in my works rare elements. My compositions include bright colors combined with precious metals like GOLD, PLATINUM, SILVER, COOPER and DIAMONDS revealing a strong influence of Japanese Artists like Ogata Korin, Hokusai, Zeshin and European Artists like Klimt being featured among others.

In my portraits I seek perfection with photographic image processing. Therefore the most important features are their high concentration of naturalism together with the details.

Since 2017, I had started working in a new project Art & Jewelry with Rose Gold, White Gold, Yellow Gold and Diamonds.

Since 2018 I am working in Coral sculptures with PLATINUM and DIAMONDS in combination with Oil Colors.

In 2019, she gave the Government of the United Arab Emirates her work THE YEAR OF TOLERANCE, a work that currently remains in that country.

In 2020, she published her first book Japanese Art and Culture to Children. Vol.I, based on the art projects created by herself and taught at the Montessori school in Japan. More than 1,500 copies have been sold in only 8 months.

In 2021 she has just published her book KOTODAMA . The Heart of Japan, Art and Culture.

In 2021, founder of the Montessori Art School, Sonia G caballero. The first Montessori School of Art in the world.

I am in continuous Innovation, Creation of New Works and taking New Projects...

Sonia G Caballer

PROFESIONAL HISTORY

2014 | TOKYO - Embassy of Spain | Spiral Exhibition

Japanese television interview during the Espiral Exhibition at the Embassy of Spain.

2014-2015 | Teaching experience in art class in Yokohama Montessori School in Japan with children from 3 to 12 years old.

2016 - Feb | TOKYO -Bunkamura Gallery | Wishes Collection Exhibition

2016 - Jun | TOKYO -Bunkamura Gallery | Platinum Collection Exhibition

2016 - Oct | TOKYO -Bunkamura Gallery | Coral Collection Exhibition

2017 - Dic | TOKYO -Bunkamura Gallery | Sumi Collection Exhibition

2017-2018 | Contacted to teach Masterclasses of Japanese art in Secondary Education Institute Itaca Tomares, Seville, Spain and for the Erasmus Plus project in the School of Primary Education Tomas Ibarra in Tomares, Sevilla, Spain also.

2019-Sep | TOKYO- Bunkamura Gallery | «Kachoufugetsu» Exhibition

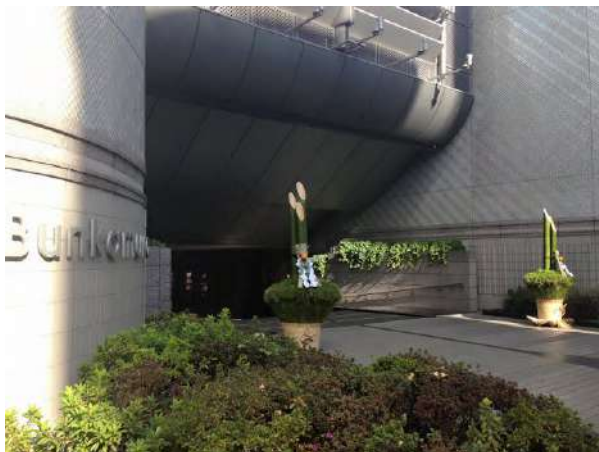
2019- Oct | Delivery of Awards of BMGE-2019 in Barcelona

2019- Oct | Delivery of the work «The Year of Tolerance - 2019» for the government of United Arab Emirates to the UAE General Consul, the Honorable Mohammed Abdullah Ali Alshamsi in Barcelona.

AWARDS

European Award for Innovation in Culture and Fashion 2022

ALYA Award for Excellence 2022





Spiral exhibition at the Spanish Embassy in Tokyo
on the 400th anniversary of Spain - Japan bilateral
relations in 2014.



CERTIFICATION OF AUTHENTICITY

All my works of are unique and exclusive pieces, carefully made with materials of the highest quality and noble metals, Platinum, 24K Gold, Silver, Diamonds...oils with natural pigments, etc. Using techniques of fine Japanese art, in fusion with Traditional European classics, give my work a unique character.

All my works have a Certificate of Authenticity belonging to one of her Seven Collections Signed, Sealed and Numbered.

I currently have 7 collections and starting a new collection of watercolors.

COLLECTION DESEOS

Small pieces of artworks like jewels which come together with wishes...

«DESEOS» are the fruits of «THE TREE Of WISHES»

With its singular color harmonies and mysterious aura, DESEOS is at the heart of the collection designed by Sonia G Caballero



THE TREE OF WISHES

2013, 90cm x 130cm | Oil on canvas, Copper leaf | Japan.

EXHIBITION HISTORY

Bunkamura Gallery Tokyo 2016

Embassy of Spain in Tokyo 2014

With its singular color harmonies and mysterious aura, »TREE OF WISHES« is a mixture of elements of Japanese culture, «tori», red wooden door, which indicates sacred area. In Japan, it is located at the entrance of the temples: «Ozajisan», small stone statue located to the right, symbolizes protection of the walker; «Kamishimo», folds of white paper that hang from the neck of the trunk, symbolize something sacred and protection.

To give life to this work I have used copper leaf, for its oxidation and its inevitable change of color.

The sea represents the welcome to anyone who wants to ask for your wish.

Currently this work has a business project, it is not for sale but there is the possibility to rent.

The result of meticulous and delicate artwork, leading to a world of peace and connection with the essence and the innermost desires of each. This work has a great power that can clear the mind and the heart.

This work was created especially to present at the exhibition to be held at the Spanish Embassy in Tokyo, on the occasion of the «Spain-Japan Dual Year 2013-2014, Fourth Centenary of Relations».

It's a work that reflects the essence of two painters, inspired by Ogata Korin's «RED AND WHITE PLUMS», Of the Japanese classical art school Rimpa, and Klimt's «THE TREE OF LIFE».



SPIRAL

2018, 1.60m X 1.30m | Oil colors & 24 K Gold on canvas

There is a mysterious order in the arrangement of things in the universe. It is a dominant symbol on Earth. The spiral

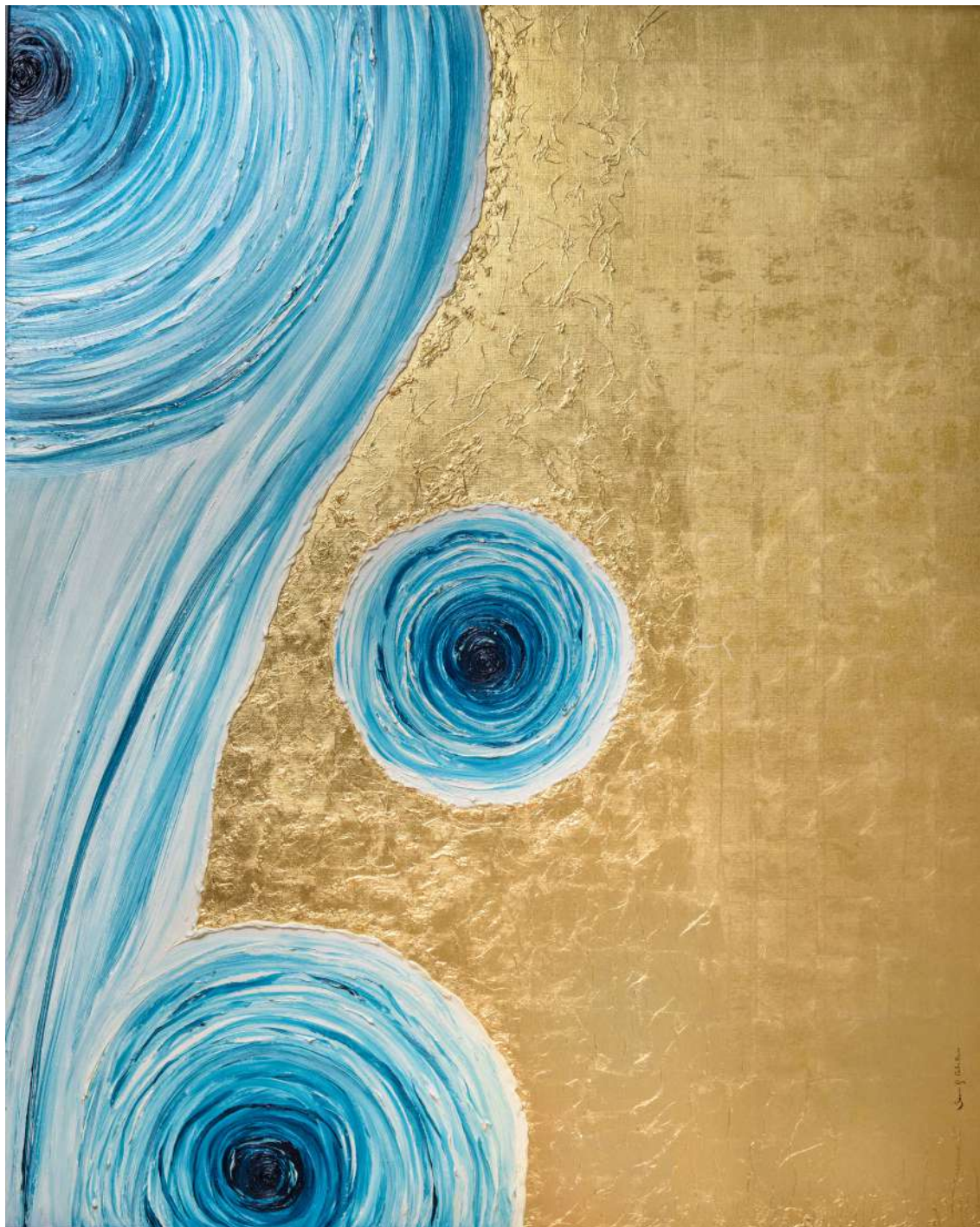
It is a repeated pattern found on all levels of the microcosm and the macrocosm, from spiral galaxies, to the weather system and DNA.

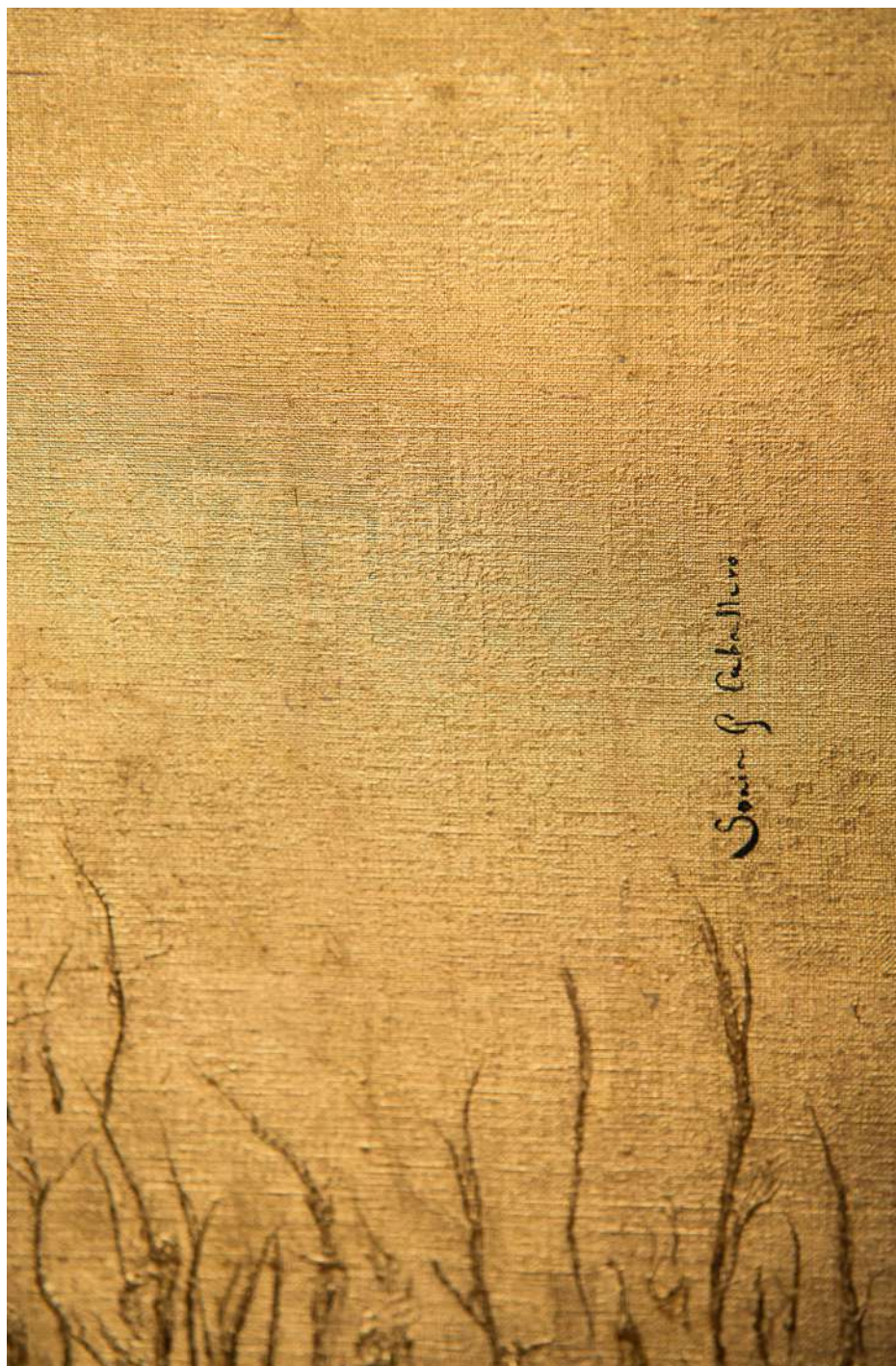
We see several types of spirals and helices in nature in shells, fossils, cobwebs etc.

Many can be seen as logarithmic spirals or spiral growth.s signify the growth and expansion, and are what we perceive as the twisting, creative force in the universe.

They are observed in the intelligible world as shapes in space, and in the visible world as shapes, here on earth. They are ubiquitous and archetypal patterns.

In my works, the waves of the sea, the wind, flowers, desires etc. are all represented.





DESEOS NECKACE

«Desires Necklace» are the fruits of «The Tree of Wishes». «Deseos» means in Spanish wishes, and they are the mixture of pieces of Fine Jewelry, made by Spanish jewelers who have been working in the world of High Jewelry for the most important brand like Tiffany or Cartier, with recognized name national and international. Ernest Oriol.

DESEOS Necklace, made with Yellow Gold 750/1000E, Pink Gold 750 /1000E, Oil Colors and Crystal Lacquer.

This project belongs to the «Deseos Collection».

Currently there are two designs, 3cm and 120cm in diameter and I continue to expand the collection with new designs every year..



2017 DESEOS | 8CM

PLATINUM, 24K GOLD and oil paintings by Sonia G Caballero on metal discs 0.1cm x 8.0cm, Mediterranean Blue, oriental red, ultramarine blue, gold yellow.



2017 *DESEOS* | 8CM

PLATINUM, 24K GOLD and oil paintings by Sonia G Caballero on metal discs 0.1cm x 8.0cm, Mediterranean Blue, oriental red, ultramarine blue, gold yellow.



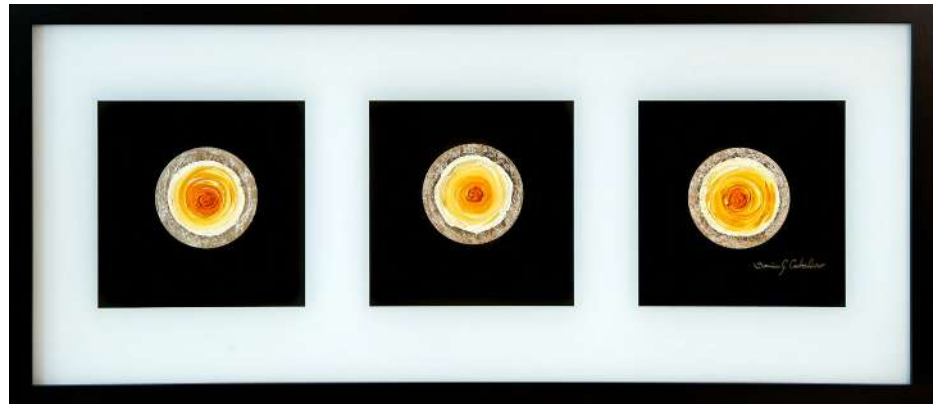
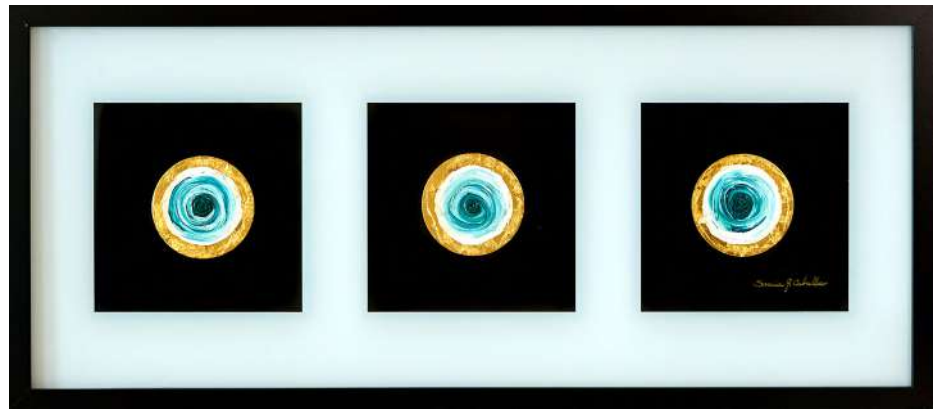
DESEOS COLLECTIONS | 2016 | 3.0 CM

Small pieces of artwork like jewels which come together with wishes..

«DESEOS» are the fruits of «THE TREE OF WISHES»

PLATINUM, 24K GOLD and oil paintings on metal discs

0.1cm x 8.0cm, 0.1cm x 3.0cm



DESEOS COLLECTIONS | 2017 | 3CM

Small pieces of artwork like jewels which come together with wishes...

«DESEOS» are the fruit of «THE TREE OF WISHES»

PLATINUM, 24K GOLD and oil paintings on metal discs
0.1cm x 8.0cm, 0.1cm x 3.0cm

The result of meticulous and delicate artwork, leading to a world of peace and connection with the essence and the innermost desires of each. This work has a great power that can clear the mind and the heart.

With its singular color harmonies and mysterious aura, DESEOS is at the heart of the collection designed by Sonia G Caballero.



THE YEAR OF THE TOLERANCE

1m X 1m | Oil colors & 24 K Gold on canvas

This work has been created for the Government of the United Arab Emirates on the occasion of «**The Year of Tolerance 2019**» and delivered to the UAE General Consul in Barcelona, the Honorable Mohammed Abdullah Ali Alshamsi.

The great legacy that the Arabs had left us with architectural art in Cordoba, Seville or Granada. Or the lexical inheritance of which a large number of words are part of our Spanish language. There I began my respect and admiration for the culture of the Middle East countries.

When I was proposed to be part of a work of «**The Year of Tolerance**» I saw it as a great opportunity to collaborate in the union among nations and to alleviate part of the suffering that there is because of the differences among people.

The Ghaf is the national tree that symbolizes the proclamation of the Year of Tolerance. This tree is thus a native species of environmental interest that represents the stability of the desert and is witness to the old traditions because it was a meeting point for the celebration of public events. What it has served to inspire me in the creation of this very special work.

The lack of water in the desert and the richness of what this means for the Arab culture, is expressed in the color blue. The quartered of gold are the arid areas of the desert where you can see the water under its cracks using a new technique for the first time for this occasion.

The three water circles that symbolize each of the three countries that are an important part of my life and in this case for this work.

My tour of the world, with more than 20 years living in Japan, made me see first hand the importance of tolerating, accepting, other ways of thinking.

This work is a bridge of union, which reaffirms the excellent relations between the United Arab Emirates and Spain.

Currently this work is exhibited in the United Arab Emirates.



Delivery of «The Year of Tolerance» to the Government of the United Arab Emirates 2019

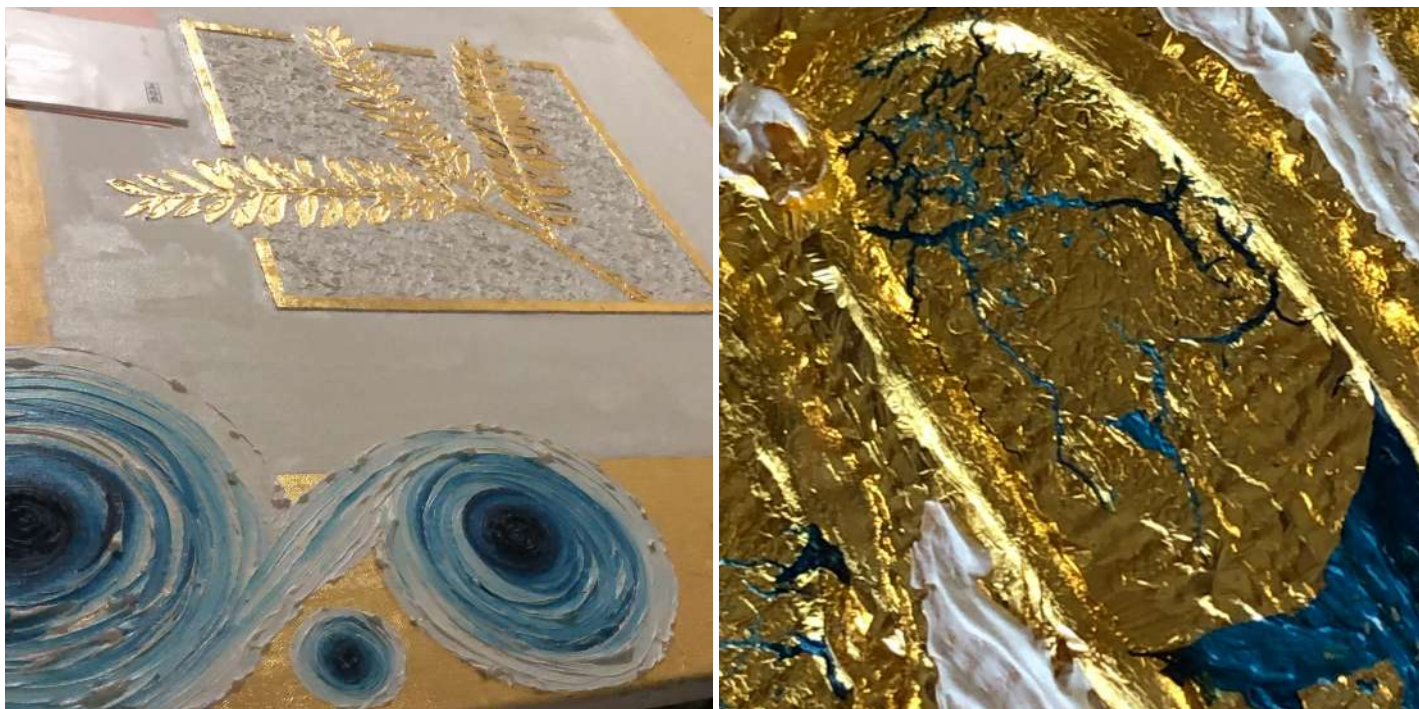


Delivery of «The Year of Tolerance» to the Government of the United Arab Emirates 2019

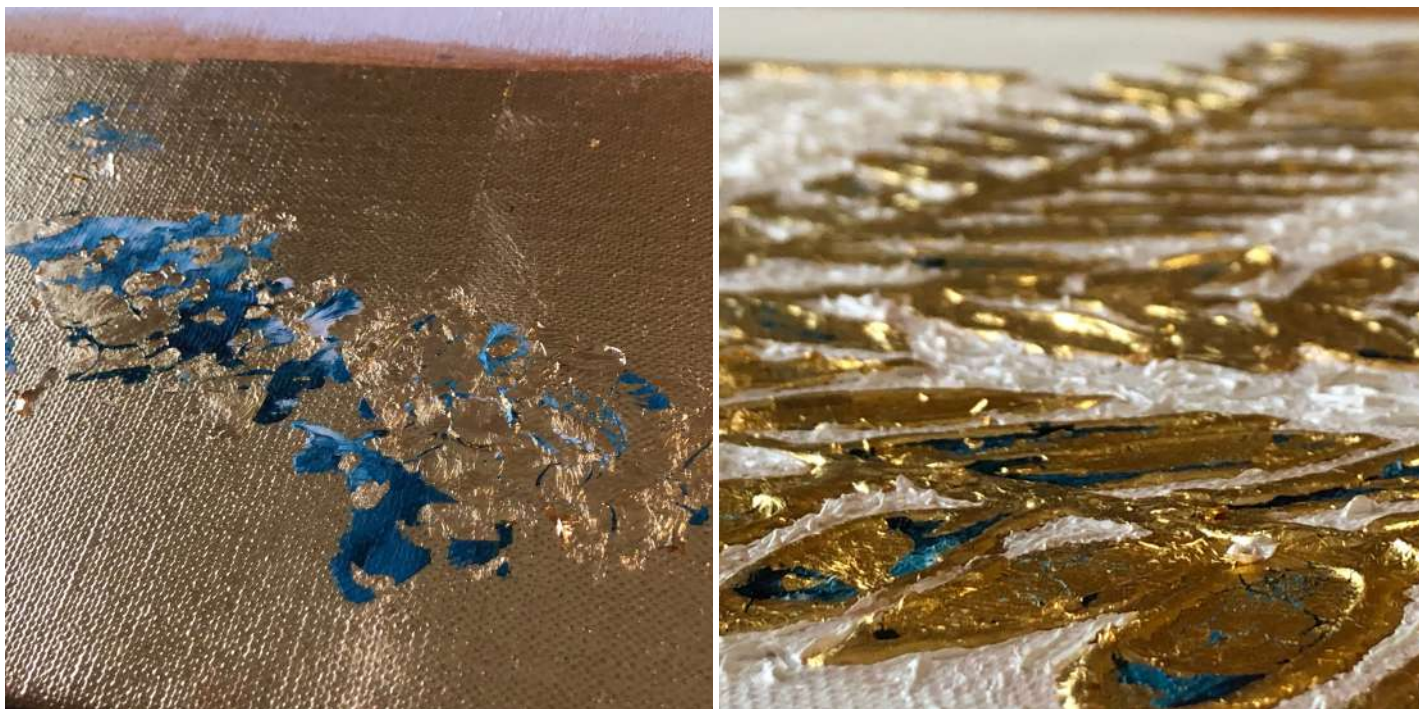


Delivery of «The Year
of Tolerance» to the
Government of the United
Arab Emirates 2019





Details of the work «The Year of Tolerance 2019». 24/kgold and oil on canavas. 100 x 100 cm



Details of the work «The Year of Tolerance 2019». 24/kg gold and oil on canvas. 100 x 100 cm

COLLECTION PLATINUM

The result of meticulous and delicate artwork , using PLATINUM, Japanese traditional lacquer and oils of maximum quality, resulting in a collection of unique works, using various techniques of Japanese art in fusion with the those of the European. The result is KOURINHAKU- OIL Technic, my own technic developed by me.

Most of the works of the Platinum collection have been acquired.

WISTERIA KYOTO

60 cm x 180 cm, Oil on canvas, Platinum, Japanese traditional lacquer | Japan

EXHIBITION HISTORY

Bunkamura Gallery Tokyo 2016

Wisteria is one of the characteristic trees in Japanese flora. In Japanese classical art we find Wisteria flowers repeatedly, represented by Japanese classical artists in their artworks including kimonos and decorations for the hairstyle of the Geishas.







WISTERIA JAPAN

2016 | 60cm x 90cm | Oil on 3D Canvas, Platinum, Japanese Traditional Lacquer (Urushi).

Wisteria is one of the characteristic trees in Japanese flora. In Japanese classical art we find Wisteria flowers repeatedly, represented by Japanese classical artists in their artworks including kimonos and decorations for the hairstyle of the Geishas.

We find beautiful trees and world-famous Wisteria parks all over Japan.





YAKUSHIMA

2016 | 32cm x 41cm, Oil on Wood Canvas, Platinum, Japanese Traditional Lacquer (Urushi). KOURINHAKU- OIL Technic
Custom made landscape. Fusion of several images provided by the client.

EXHIBITION HISTORY

Bunkamura Gallery Tokyo 2016





HATSUHNODE

2016 | 32cm x 41cm, Oil on Wood Canvas, Platinum, Japanese Traditional Lacquer (Urushi). Japan. KOURINHAKU- OIL Technic
Scenery of Mt Fuji in winter. Custom made landscape. Fusion of several images provided by the client.

EXHIBITION HISTORY

Bunkamura Gallery Tokyo 2016

SAKURA IN WINTER

2017 | 40 cm x 50 cm, Oil on canvas, Platinum & Japanese Traditional Lacquer
KOURINHAKU - OIL Technic-

EXHIBITION HISTORY

Bunkamura Gallery Tokyo 2019





WISTERIA

2016 | 30 cm x 120 cm (30 cm x 60 cm x 2 p) | Platinum and Oil on Cubic Canvas

Abstract representation of Wisteria flowers falling and floating, expressing its lightness and freshness in the air.

Wisteria is one of the characteristic trees in Japanese flora. In Japanese classical art we find Wisteria flowers repeatedly, represented by Japanese classical artists in their artworks including kimonos and decorations for the hairstyle of the Geishas.

Wisteria is a flower loved by the Japanese since ancient times & Kyoto is the heart of this traditional and cultural aspect of Japan.

We find beautiful trees and world-famous Wisteria parks all over Japan.



GLICINA

2016 | 60 cm x 60 cm (60 cm x 30 cm x 2 p) | Platinum, Japanese Traditional Lacquer (Urushi), Oil on Cubic Canvas.

Expression of the different shades of color of the flowers of Glycine and its trunk.

Wisteria is one of the characteristic trees in Japanese flora. In Japanese classical art we find Wisteria flowers repeatedly, represented by Japanese classical artists in their artworks including kimonos and decorations for the hairstyle of the Geishas.

Wisteria is a flower loved by the Japanese since ancient times & Kyoto is the heart of this traditional and cultural aspect of Japan.

We find beautiful trees and world-famous Wisteria parks all over Japan.



COLLECTION **CORAL**

The Coral Collection is a collection of artworks that bring the viewer to the world of treasures on the seabed and its wonderful creatures:
a world unknown to most people.

I intended to create an awareness of caring for something wonderful and the unique creatures that hide in the sea, using a great variety of materials, such as precious metals such as Platinum, 24K Gold, Silver and oils to express their beautiful coloring.

It is a way of letting people know about the wonderful life under the sea with its treasures and our duty to preserve them.

Part of the money collected for the works of this collection is destined to projects of reforestation and conservation of marine flora.



CORAL SPAWNING
2017-2018
Sonia G Caballero

CORAL SPAWNING

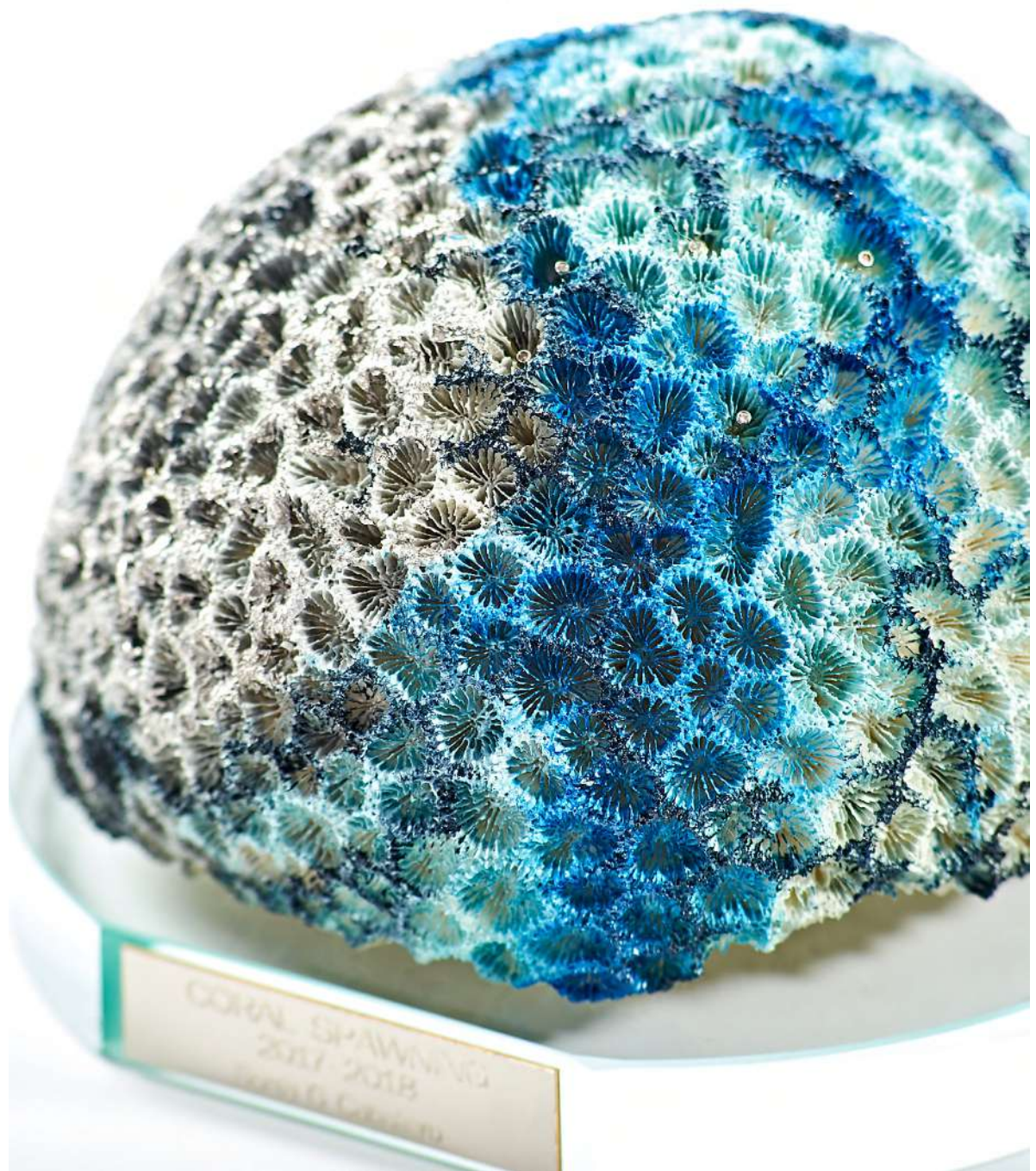
2018 |

Natural Coral, Oil Paint,
Platinum & 21 Diamonds
| Japan

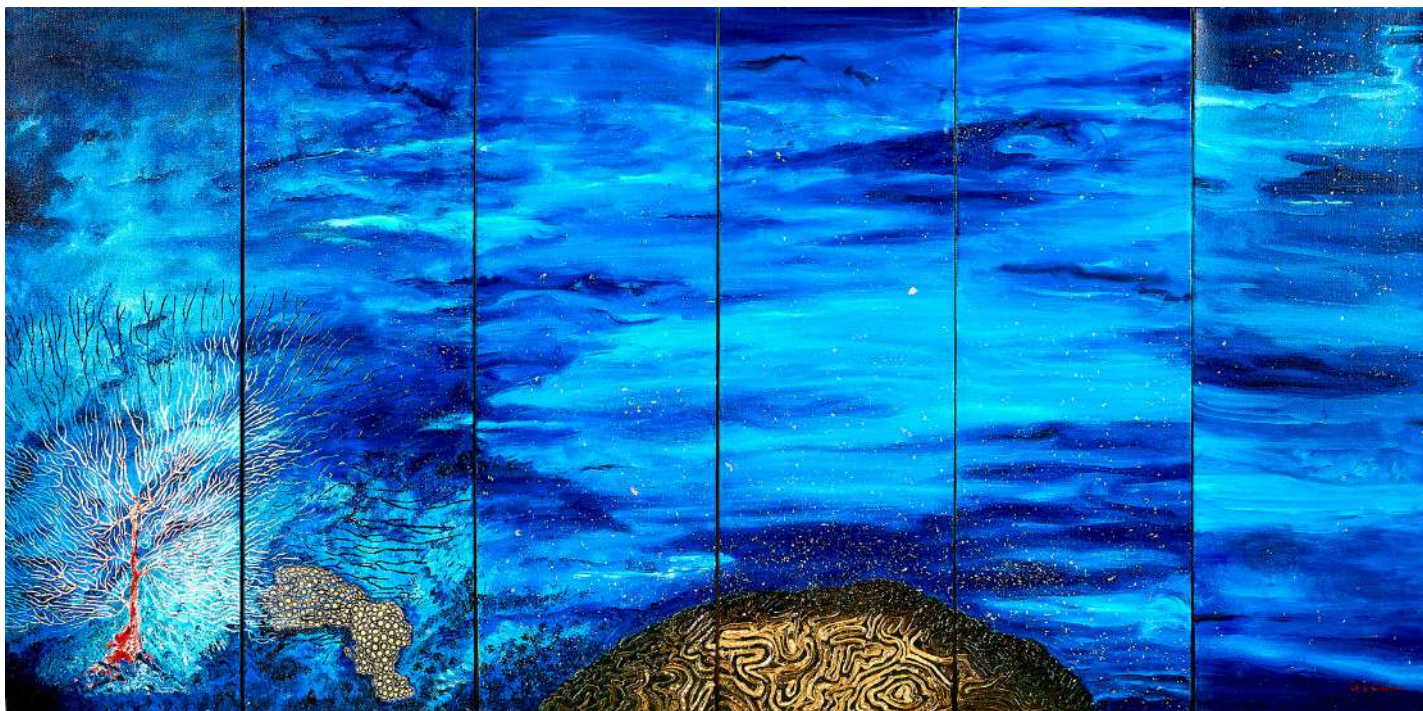
CORAL SPAWNING is
a representation of the
magical night in which
the corals

spawn once a year &
Diamonds symbolize
coral eggs.

CORAL SPAWNING
is my desire for the
reforestation and
conservation of the
seabed.







CORAL SPAWNING

2014 | 60 x 120 | 6 x 3D Canvas | Oil on 3D Canvas, Platinum, 24K Gold leaf, 24K Gold Powder, and Silver

CORAL SPAWNING is a representation of the magical night in which the corals spawn once a year. The coral eggs, floating in the water with Platinum, are born from the brain coral represented with 24K Gold dust in the center towards the left the kaleidoscope coral with 24k Gold leaves.

EXHIBITION HISTORY

Bunkamura Gallery Tokyo 2016

Embassy of Spain in Tokyo 2014



SOFT CORAL

2014 | SOFT CORAL|20cm x 60cm |Oil on 3D Canvas and Platinum

Coral kaleidoscope on the sea floor in shallow sea water at night

The CORAL COLLECTION is a collection of artworks that bring the viewer to the world of treasures on the seabed and its wonderful creatures: a world unknown to most people.

I intended to create an awareness of caring for something wonderful and the unique creatures that hide in the sea, using a great variety of materials, such as precious metals such as Platinum, 24K Gold, Silver and oils to express their beautiful coloring.

Part of the money collected for the works of this collection is destined to projects of reforestation and conservation of marine flora.

CORAL 4

2016 | CORAL GOLD|20cm x 20cm x 10cm| 3D
Coral and 24K GOLD

Hard coral on sea floor in crystal clear waters.

The CORAL COLLECTION is a collection of artworks that bring the viewer to the world of treasures on the seabed and its wonderful creatures: a world unknown to most people.

I intended to create an awareness of caring for something wonderful and the unique creatures that hide in the sea, using a great variety of materials, such as precious metals such as Platinum, 24K Gold, Silver and oils to express their beautiful coloring.

It is a way of letting people know about the wonderful life under the sea with its treasures and our duty to preserve them.

Part of the money collected for the works of this collection is destined to projects of reforestation and conservation of marine flora.





CORAL GOLD

2017 | CORAL GOLD|20cm x 20cm x 10cm| 3D Coral and 24K GOLD

CORAL GOLD is the result of meticulous and delicate artwork.

The CORAL COLLECTION is a collection of artworks that bring the viewer to the world of treasures on the seabed and its wonderful creatures: a world unknown to most people.

I intended to create an awareness of caring for something wonderful and the unique creatures that hide in the sea, using a great variety of materials, such as precious metals such as Platinum, 24K Gold, Silver and oils to express their beautiful coloring.

Part of the money collected for the works of this collection is destined to projects of reforestation and conservation of marine flora.

CORAL PLATINUM

2017 | CORAL PLATINUM|25cm x 16cm x 11cm| 3D Coral and Platinum

CORAL PLATINUM is the result of meticulous and delicate artwork.

The CORAL COLLECTION is a collection of artworks that bring the viewer to the world of treasures on the seabed and its wonderful creatures: a world unknown to most people.

I intended to create an awareness of caring for something wonderful and the unique creatures that hide in the sea, using a great variety of materials, such as precious metals such as Platinum, 24K Gold, Silver and oils to express their beautiful coloring.

Part of the money collected for the works of this collection is destined to projects of reforestation and conservation of marine flora.







25 ° C

2014 | 60 x 120 | Oil on 3D Canvas, Platinum, 24K Gold Powder and Silver Powder | Japan

This work alludes to the current situation of global warming.

25 ° C is the ideal temperature to live corals.

The spawning of the brain coral represents my desire for the reforestation and conservation of the seabed

EXHIBITION HISTORY

Bunkamura Gallery Tokyo 2016

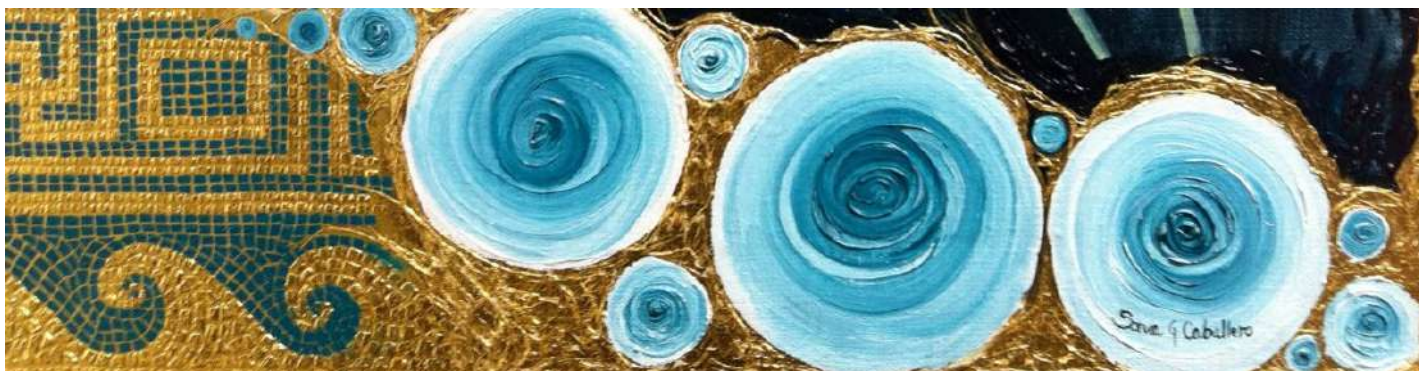
Embassy of Spain in Tokyo 2014

COLLECTION **PORTRAITS**

The result of meticulous and delicate artwork, 'Portraits' seeks perfection through photographic image processing. The most important features are their high concentration of naturalism mixed with the details.

The contrast of Oil colors mixed with precious metals, 24K Gold and Platinum, gives the works a highly decorative value.





LUIS

2012 | 53cm x 65cm | Oil on Canvas, 24k Gold and Japanese traditional paper, 'Washi' Japan

It is a portrait of my first son Luis at the age of 1 year. This work represents the fusion of Japanese oriental culture with cherry blossoms and Western European culture with a mosaic 2,300 years ago.

EXHIBITION HISTORY

Embassy of Spain in Tokyo 2014



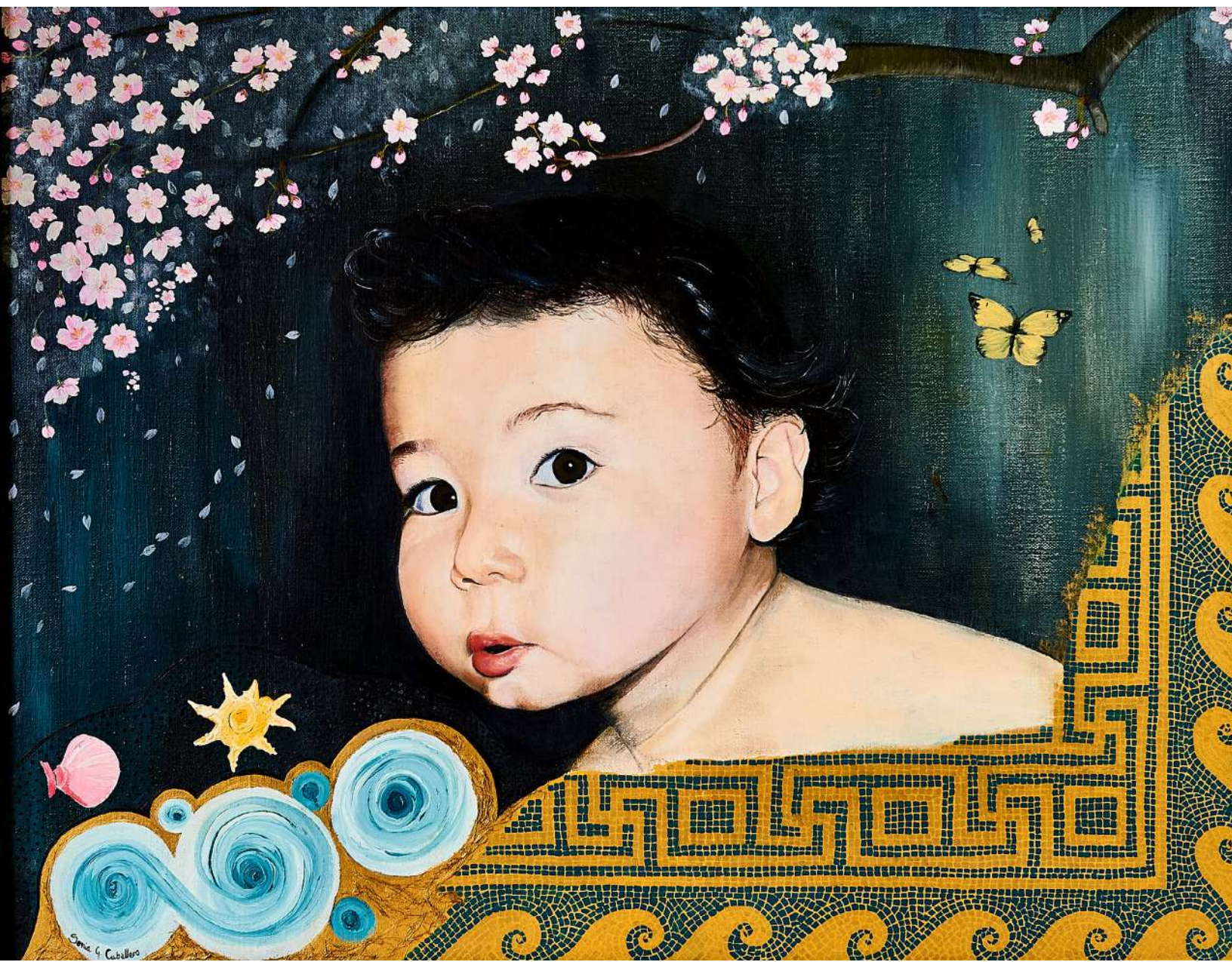
MIGUEL

2009 | 53cm x 65cm, Oil on canvas and Japanese Washi | Japan

It is a portrait of my second son Miguel at the age of 1 year. This work represents the fusion of Japanese oriental culture with cherry blossoms and Western European culture with a mosaic 2,300 years ago and symbolism of the sea with blue spirals..

EXHIBITION HISTORY

Embassy of Spain in Tokyo 2014



SOFÍA

2012 | 41cmx32cm | Oil painting
with 24K Gold Powder on wood
canvas | Japan

The result of meticulous and
delicate artwork, «Golden
Portraits» are an adaptation of
the technique of oil painting on
wood by Leonardo Da'Vinci,
in his painting «Wife's head»,
using oil paints and 24K Gold
powder.

EXHIBITION HISTORY

Embassy of Spain in Tokyo 2014





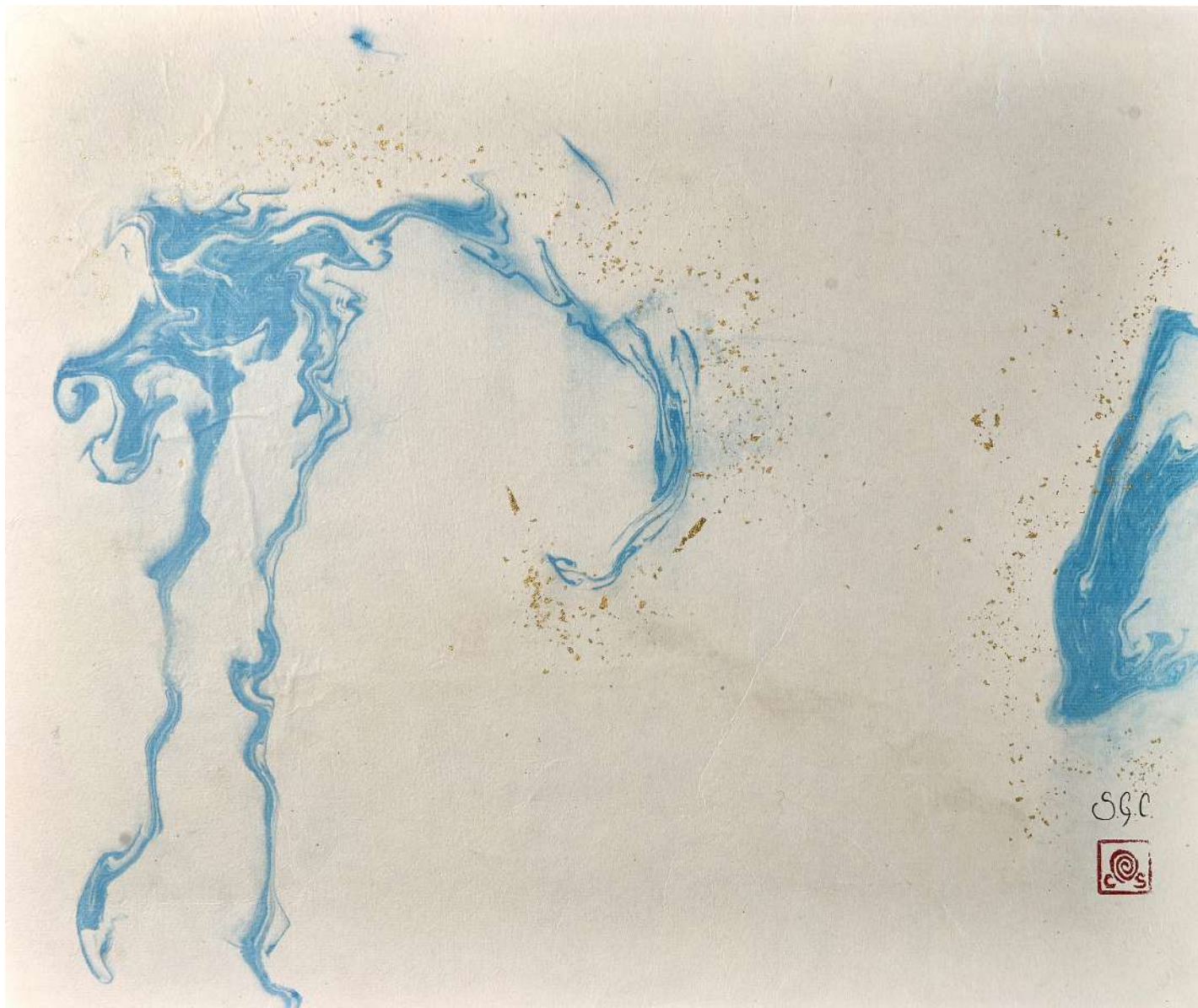
ÁNGEL

2013 | 41cmx32cm | Oil painting with 24k Gold powder on wood canvas.

The result of meticulous and delicate artwork, Golden Portraits are an adaptation of the technique of oil painting on wood by Leonardo Da'Vinci, in his painting «Wife's head», using oil paints and 24K Gold powder.

COLLECTION **SUMI**

The Sumi-e or Suibokga is a traditional drawing technique in its monochromatic ink origins of the Japanese painting school. In my works I also use Iro-sumi, which is colored ink, mixed with precious metals, Platinum and Gold of 24 K. Using various techniques which are exclusive to Suibokuga.



NAMI

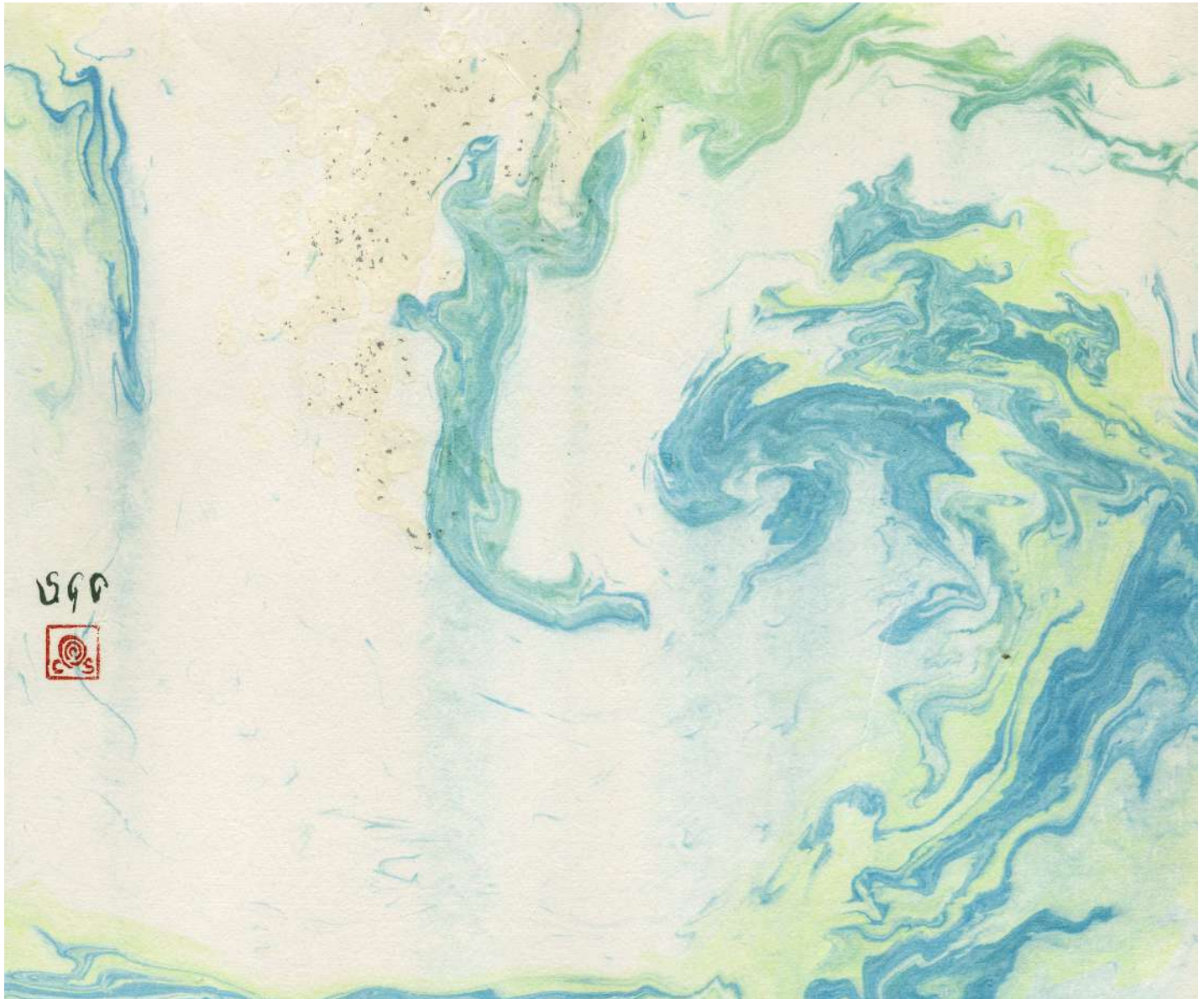
NAMI - 2014 | 45,5cm x 38,0cm Japanese traditional paper «Washi», Colored Japanese Ink & 24K Gold.

Japanese Wave Crest in the Pacific Ocean off the coast of Mount Fuji.

EXHIBITION HISTORY

Bunkamura Gallery Tokyo 2016

Embassy of Spain in Tokyo 2014



NAMI

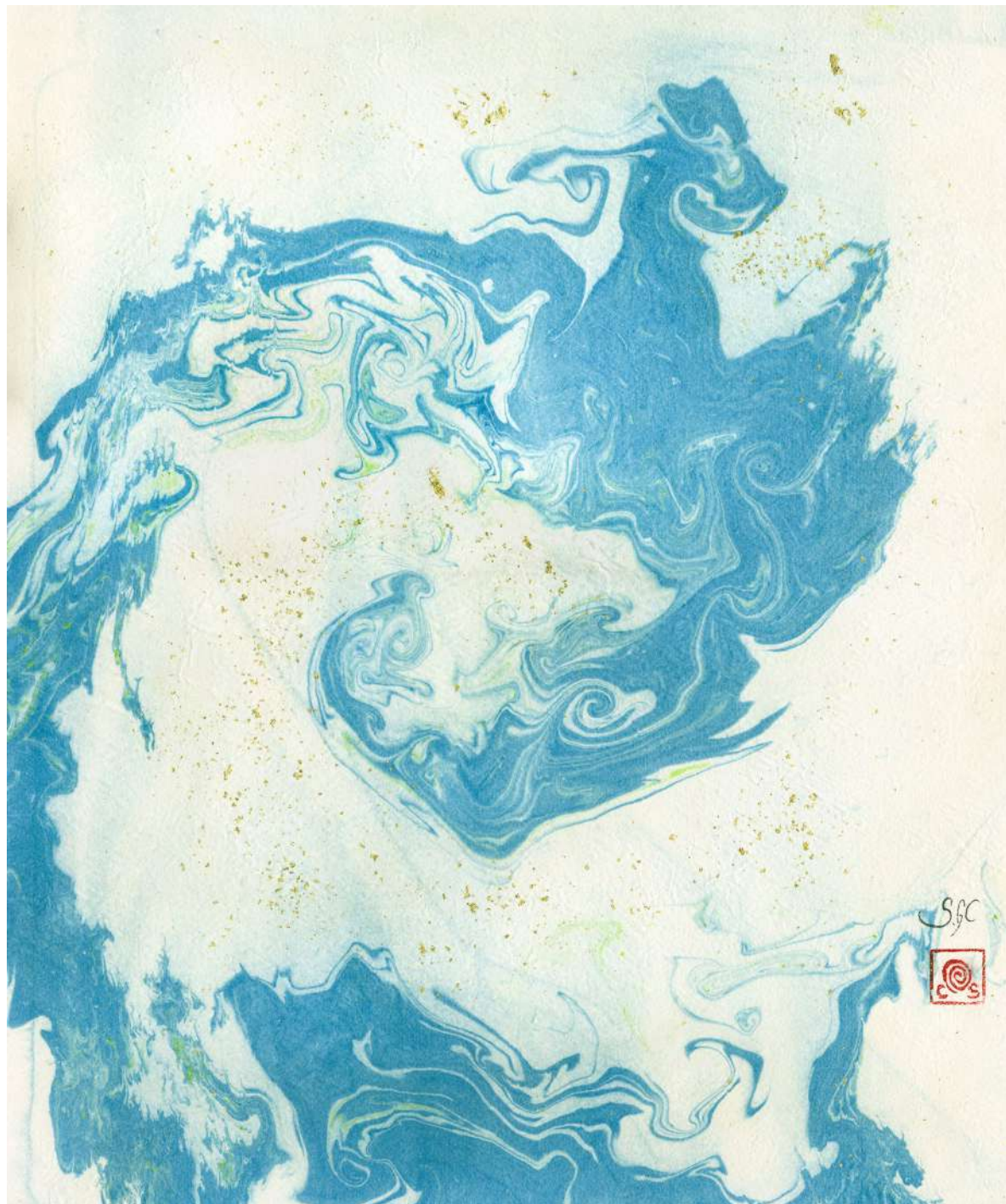
NAMI - 2014 | 45,5cm x 538,0cm Japanese traditional paper «Washi», Colored Japanese Ink & Platinum.

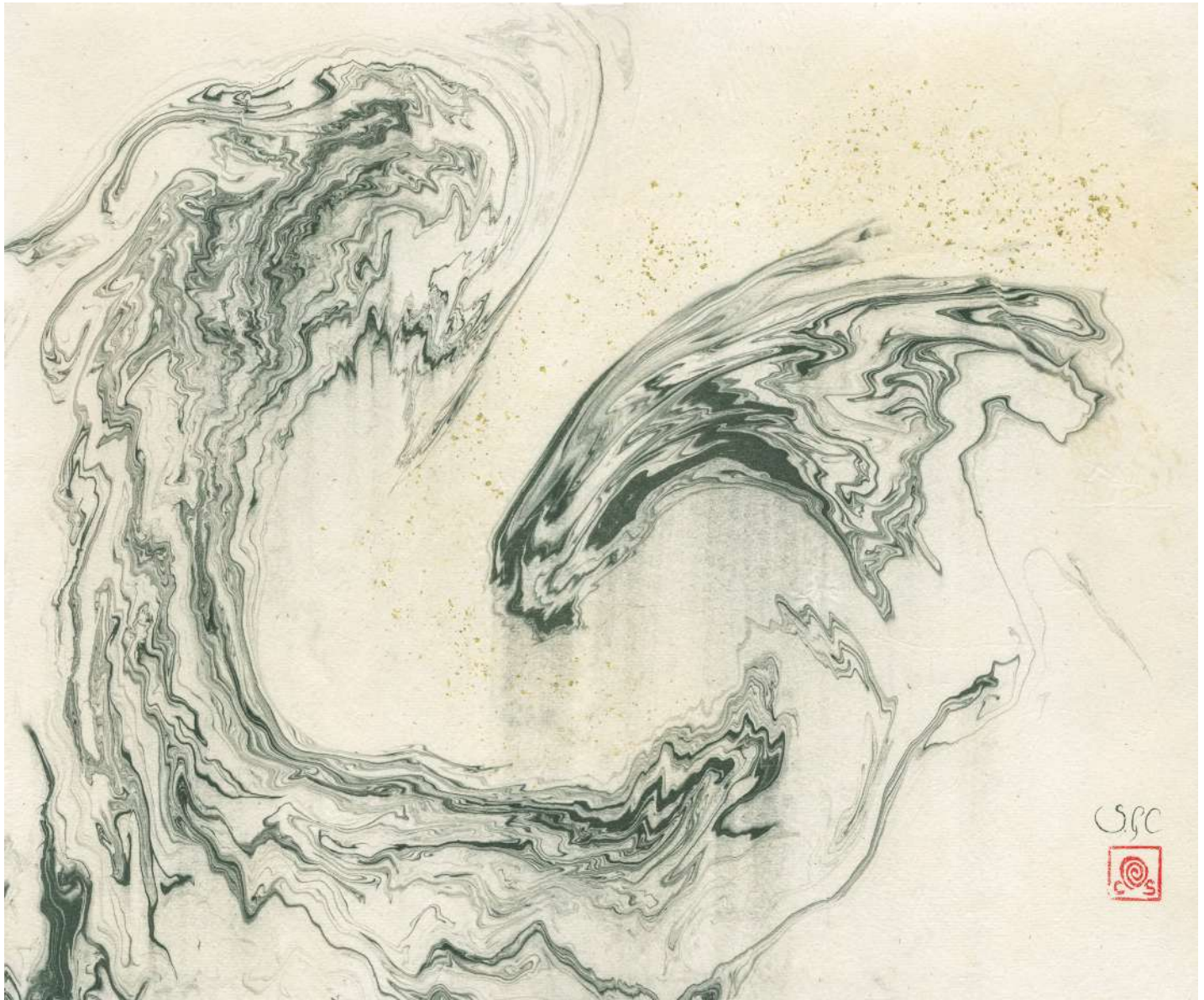
Sumi-e or Suibokuga is a traditional drawing technique in its monochromatic ink origins of the Japanese painting school. In my works I also use Iro-sumi, which is colored ink, mixed with precious metals, Platinum and 24K Gold. Using various techniques which are exclusive to Suibokuga.

NAMI

NAMI- 2017 | 45,5cm
x 38,0 cm Japanese
traditional paper
«Washi», Colored
Japanese Ink & 24K
Gold.

Sumi-e or Suibokga is
a traditional drawing
technique in its
monochromatic ink
origins of the Japanese
painting school. In my
works I also use Iro-
sumi, which is colored
ink, mixed with precious
metals, Platinum and
24K Gold . Using various
techniques which are
exclusive to Suibokuga.





NAMI

NAMI - 2017 | 45,5cm x 38,0 cm Japanese traditional paper «Washi», Japanese Ink & 24K Gold.

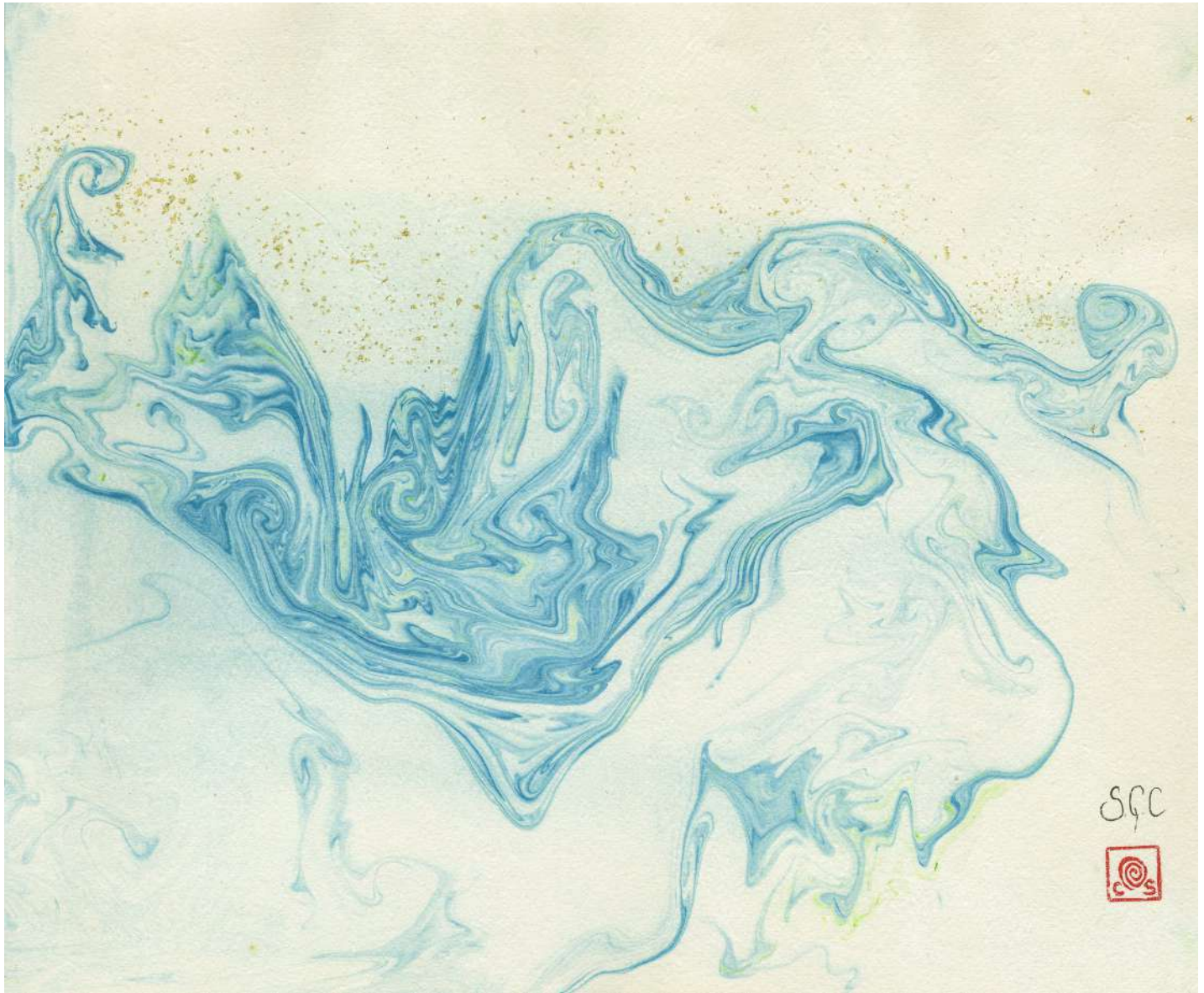
Sumi-e or Suibokuga is a traditional drawing technique in its monochromatic ink origins of the Japanese painting school. In my works I also use Iro-sumi, which is colored ink, mixed with precious metals, Platinum and 24K Gold. Using various techniques which are exclusive to Suibokuga



GAKE

GAKE – 2014 | 45,5cm x 38,0 cm Japanese traditional paper «Washi», Colored Japanese Ink & 24K Gold.

Sumi-e or Suibokuga is a traditional drawing technique in its monochromatic ink origins of the Japanese painting school. In my works I also use Iro-sumi, which is colored ink, mixed with precious metals, Platinum and 24K Gold. Using various techniques which are exclusive to Suibokuga.



HAMABE

HAMABE – 2017 | 45,5cm x 38,0 cm Japanese traditional paper «Washi», Colored Japanese Ink & 24K Gold.

Sumi-e or Suibokuga is a traditional drawing technique in its monochromatic ink origins of the Japanese painting school. In my works I also use Iro-sumi, which is colored ink, mixed with precious metals, Platinum and 24K Gold. Using various techniques which are exclusive to Suibokuga.



COLLECTION **JAPAN**

The Japan Collection is inspired by the 20 years almost that I have been living in Japan. I have come to love this land, its culture, its wonderful landscapes, its classic art, as well as its delicacy. The works of this collection are an impression perceived by a cluster of emotions, feelings, together with the wonderful places that have been etched into my heart.

The materials used are oil paintings and precious metals, 24K Gold, Platinum...



WISTERIA

2014 | 90cm x 130cm | Oil on Canvas.

This is a 350 years old Wisteria tree, located in Ashikaga Flower Park in Tochigi, Japan.

This Park is famous throughout the world for its centuries-old Wisteria trees. This park receives hundreds of thousands of visitors daily in the flowering season of Wisteria, April and May, coming from all points of Japan and the world.

It is a place full of magic and intoxicating aroma.

EXHIBITION HISTORY

Bunkamura Gallery Tokyo 2016

Embassy of Spain in Tokyo 2014



WISTERIA GARDEN

2016, 32cm x 41cm, Oil on Wood Canvas,
Platinum, Urushi lacquer.

W





Spring Caballero



WISTERIA & KUROAGEHA

2019 | 1.00m x 1.70m | Silver, Oil Colors & Urushi lacquer on canvas.

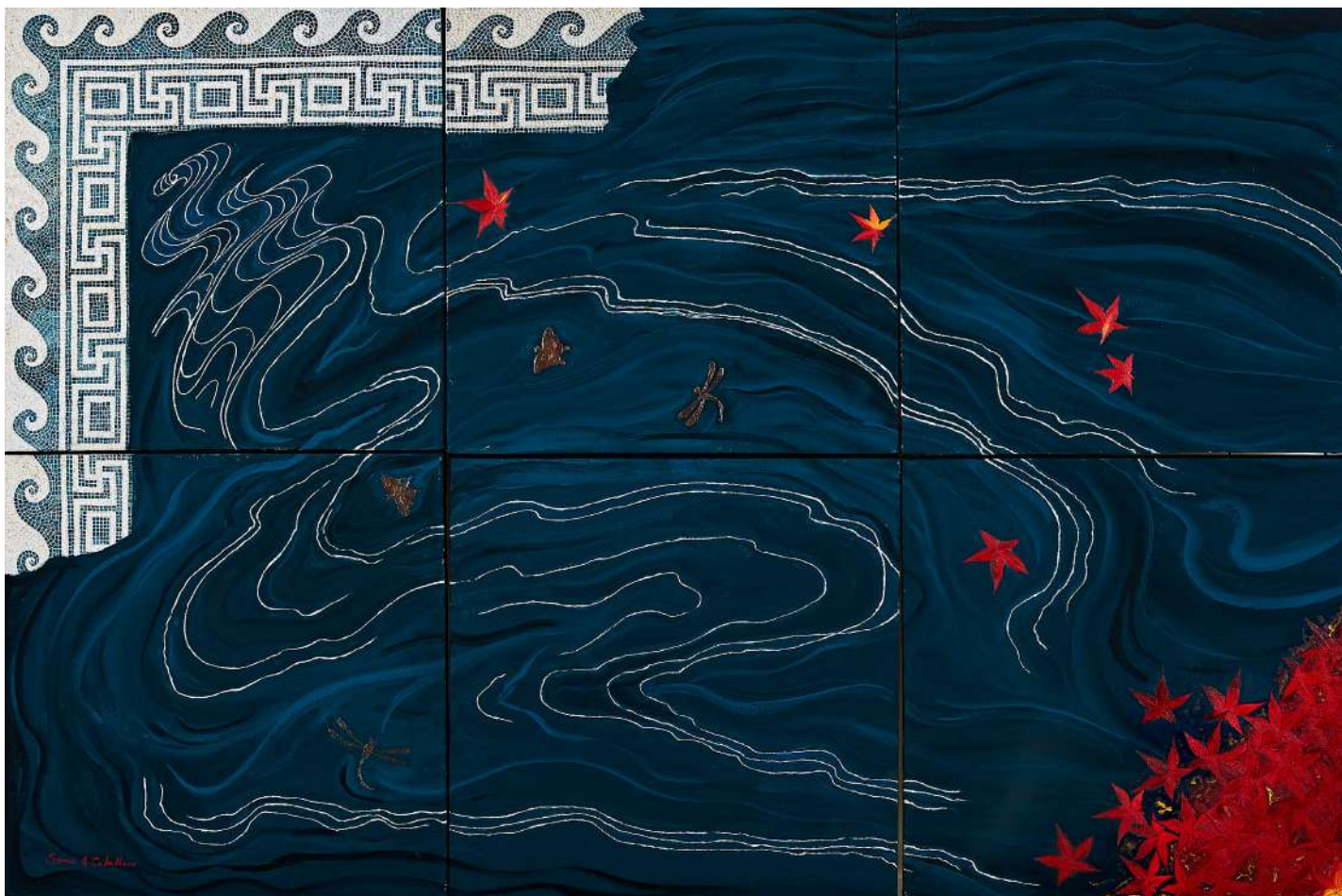
The Rimpa School is one of Japan's best known art styles.

In Japan, there is the expression *kachōfūgetsu* («flowers, birds, wind and moon»). Each is a beautiful symbol of nature, and this expression signifies the elegant taste for capturing changes in weather, adding the wind and moon that express evanescence and establishing an ideal way to express the beauty of *kachōfūgetsu*. Our hearts are taken when we look at the plants, flowers, birds, and insects of the changing seasons and are drawn to the gentle wind and moonlight.

EXHIBITION HISTORY

Bunkamura Gallery Tokyo 2019





AUTUMN DRAGONFLIES

2012 | 80cm x 120cm | Oil and Acrylic on 3D Canvas and Aluminum | Japan

Inspired in a scene from the last autumn 's dragonflies in Japan.

This work is influenced by Japanese artists Hokusai, Zeshin and Kayama.

EXHIBITION HISTORY

Bunkamura Gallery Tokyo 2016

Embassy of Spain in Tokyo 2014



MIHARU

2008 | 60.5cm x 73cm | Oil on Canvas and 24 K Gold.

Inspired by the famous cherry blossoms of Miharu in Fukushima. It is Number One in the ranking of the most visited places of the cherry blossom season in Japan.

It is a fusion of several typical Japanese elements. Mt. Fuji, the cherry blossom at night and the gold that is used in Japanese art.

Every year in spring thousands of Japanese and people from all over the world visit the famous Miharu cherry blossom.

AIKAWA

2008 | 60cm x 20cm | Oil on Canvas

Aikawa is a beautiful place in the mountains of the province of Kanagawa in Japan. It is a spring landscape with cherry blossoms at night.

These mountains hold great memories of my life in Japan. Moments of absolute happiness and a source of inspiration for my artwork and connection with my divine side. A place that has left a great mark on my heart and my work.





PACIFIC

2004 | 38cm x 45cm | Oil paint on canvas.

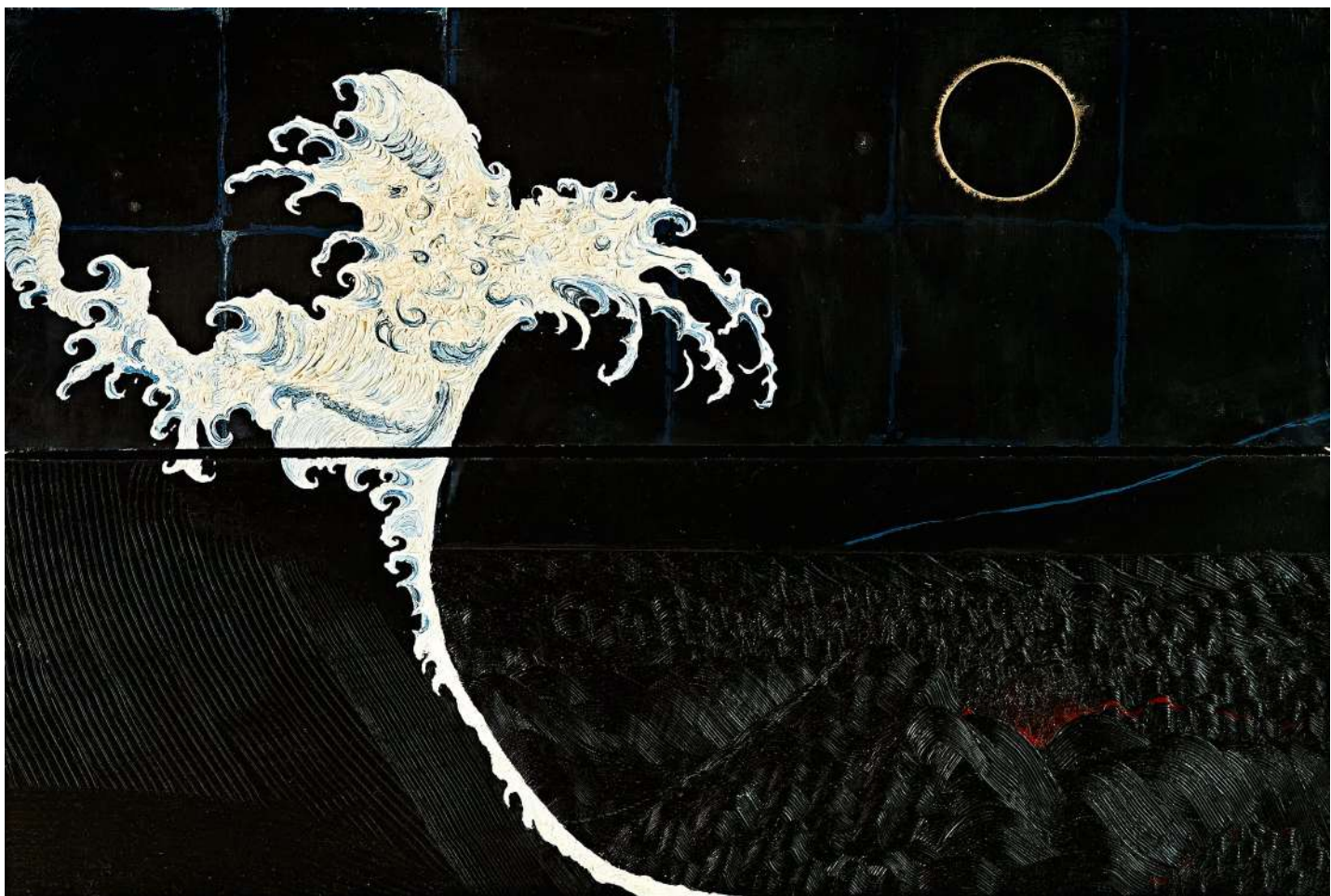
PACIFIC is a work that represents a landscape of the Japanese coast of the Pacific Ocean.

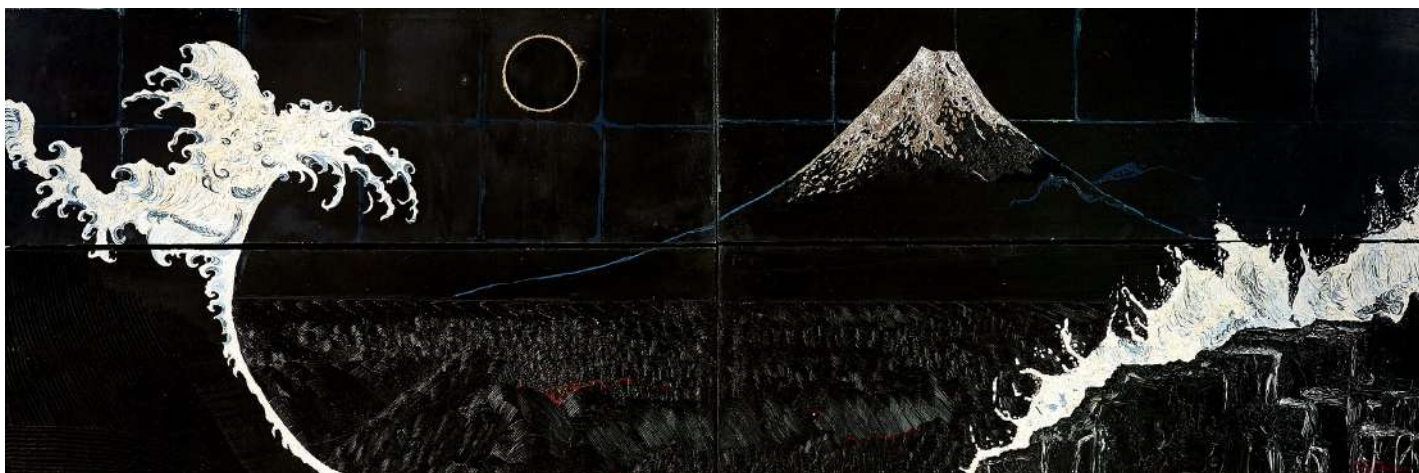


AUTUMN IN MOUNT FUJI

2004 | 38cm x 46cm | Oil on Canvas.

Inspired in a realistic landscape of the Japanese autumn. Mount Fuji is in contrast to the red color of the famous «Japanese Cypresses» (Momilli), with their star-shaped leaves, as well as the blue sky.





ECLIPSE

2009 | 40cm x 120 cm | Oil on 3D Canvas, Aluminum | Japan

In this work the influence of Japanese artists like Shibata Zeshin, Katsushika Hokusai and Ando Hiroshige can be appreciated.

It represents a protest against the dolphin killing that takes place on the coasts of the Japanese Pacific, as well as in other parts of the world.

In the case of Japan, it is a reality that people are not aware of.

EXHIBITION HISTORY

Bunkamura Gallery Tokyo 2016

Embassy of Spain in Tokyo 2014



COLLECTION **ART WORKS**

ARTWORKS is the result of meticulous and delicate artwork , using materials of the highest quality, and precious metals, 24K GOLD, PLATINUM, SILVER, DIAMONDS...

Giving place to a collection of unique works.





WIND JEWEL BOX

2013 | 16cm x 15cm x 20cm | Oil Painting and 24k Gold on Wooden box

Handmade wooden jewelry box. Handmade wooden Jewel Box made to order custom made by Spanish carpenter.

Unique piece treated with Oil Paint and 24K GOLD.

«Wind» refers to soft winds coming and indicating temperature changing near the end of summer and we are about to enter a new season, autumn.

EXHIBITION HISTORY

Embassy of Spain in Tokyo 2014

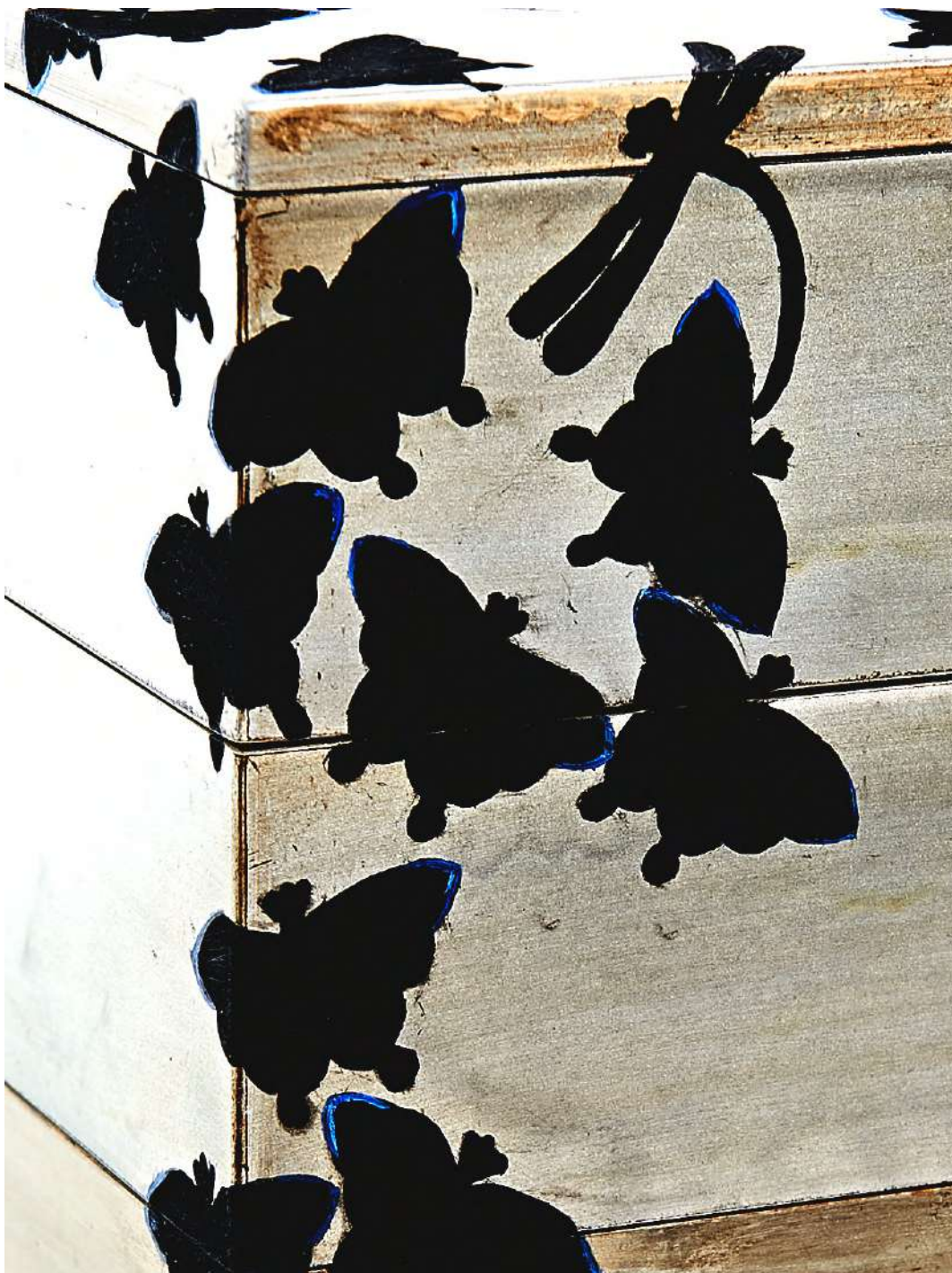


TWILIGHT JEWEL BOX

2013 | 14cm x 27cm x 30cm | Urushi and Silver dust on Wooden Box

Twilight is an interpretation of the evening twilight time in late summer in Japan, just when the Japanese dragonflies and black butterflies, Kuroageha, are still visible, and the night bats begin to appear.







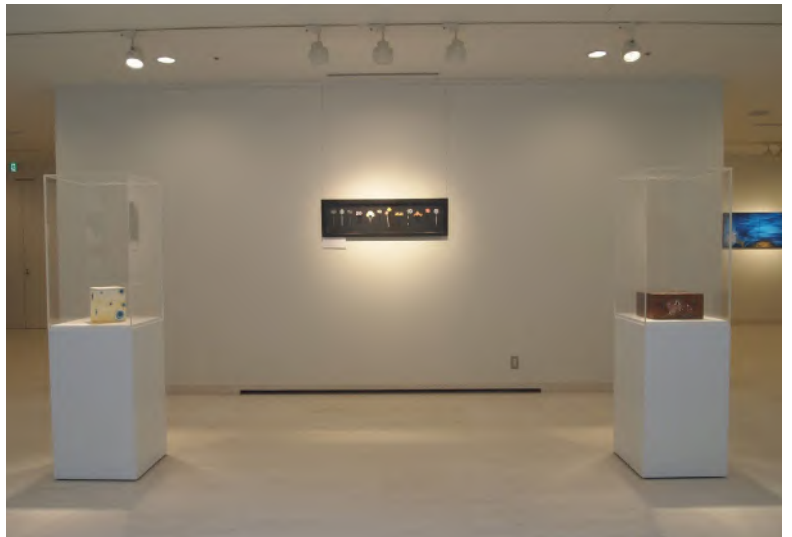
TWILIGHT

2013 | 14cm x 27cm x 30cm | Oil
Paint and Silver dust on Wooden
Box.

Handmade wooden Jewel Box
made to order custom made by
Spanish carpenter.

Unique piece treated with Oil
Paint and Silver dust. Its name
refers to the dusk of the day, when
there are still some swallowtail
butterflies flying and mixed with
the first bats of the night.







HAIR SLIDE 12 MONTHS

2013

Collection of twelve unique designs of hair slide, with the twelve months of the year. Using as base of Onix, Malachite, Lapislazuli, Nacre and Horn decorated with PLATINUM, 24K GOLD and Oil Painting.

Each piece is inspired by the different elements which are characteristic of its particular month.

MAY – 2013 | 11cm Nacre decorated with 24K Gold and Oil Paint. May is the month of flowers, there are colorful flowers in spring.

JUNE, 2013 | 15cm Onyx decorated with 24 K Gold and Oil Paint

JULY, 2013 | 15cm Two pieces, Nacre and Onyx decorated with Oil Paint and 24K Gold. JULY comb represents «Tanabata», a Japanese story.

AUGUST, 2013 | 11cm Lapis lazuli decorated with 24K Gold and Oil Paint The design of the month august, belongs to a mosaic portrait part LUIS

SEPTEMBER, 2013 | 15 cm Unique piece of horn acetate treated with Oil paint, 24K Gold and Japanese Washi. Its name, «Winds», refers to the coming winds and temperature change indicating that it is near the end of summer and we are about to enter a new season, autumn.

OCTOBER, 2013 | 11cm Onyx decorated with oil paint and «Tamamushihaku». This design is extracted from the box «TIME» and represents the entrance of autumn with its colors and the near fall of the leaves.

NOVEMBER, 2013 | 15 cm Unique and exclusive piece of Onyx, treated with Oil Paint and 24K Gold. This design is drawn from «THE TREE OF WIS», represents a wish and its color evokes the color of the Japanese Cypress, autumn color in Japan.

DECEMBER, 2013 | 15cm Unique piece, malachite treated with Platinum. This design refers to the snow of the month of December and snow.







